



THE **MACH5 HD**

Get the best experience!

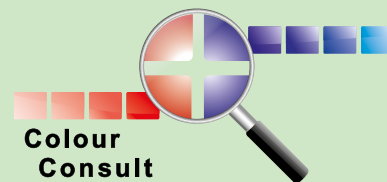
Multi Area Colour-measurement Hardware for fast, automatic spectral measurements of multiple samples in one go and measurements of large inhomogenous surfaces. With the Mach5 HD also: glossy objects.

EDITION 2025.248

INTRODUCTION

Image Analysis tools and software are much more common nowadays in our industry and the use hereof is already accepted in most standards like AISE, IKW, Ecolabel etc. The Mach5 HD (Multi Area Colour-measurement Hardware) is the fast and accurate solution for measuring detergent performance, because the Mach5 HD allows you to perform multiple measurements simultaneously. The Mach5 HD combines an industrial camera with LED lightsource technology to create a spectral image of all selected areas, by analyzing all the images taken in different light spectra. The fact that the Mach5 HD is able to quantify large inhomogeneous surfaces makes the Mach5 HD even more versatile.

The Mach5 HD streamlines the performance analysis of multiple samples with its one-step measurement cycle. This will significantly boost the productivity and measurement capacity of your lab, while maintaining the accuracy of a spectral approach. The Mach5 HD was developed jointly by CFT BV and Colour Consult BV. Sales and delivery are coordinated by CFT BV. Colour Consult BV handles the technical support.



BENEFITS

A major benefit of the Mach5 HD over traditional spectrophotometers is the fully flexible area shape and size selection. These selection areas can be saved and reused if necessary to ensure that you can accurately measure the same areas again. This also offers opportunities for instance for CFT dishwash monitors or even actual plates and cups. Uneven

distribution is no problem for the Mach5 HD. By measuring the entire area, average readings can be taken for these samples. The Mach5 HD even allows you to quantify testmaterials that are cleaned using the Sheen Washability Tester. In addition, measuring with the Mach5 HD is on average 70% faster than with the traditional spectrophotometer.

TECHNICAL DETAILS

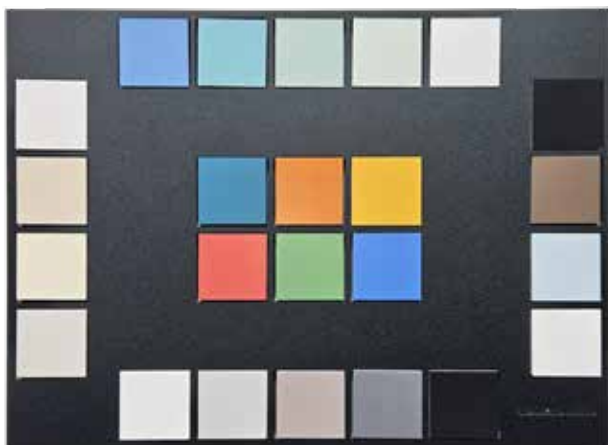
The Mach5 HD is equipped with multiple lightsources which together cover the spectrum from 400-700 nm, corresponding with colours visible to the human eye.

The combination of the spectral sensitivity of the camera and the selected light sources give results that are similar to of a

fully equipped spectrophotometer with D65 lightsource with a UV-filter in place (UV excluded). Output is given in $L^*a^*b^*$ -values, XYZ-values and % reflection from 400 to 700nm.

Extensive testing has shown that 97.65% of the L^* -values measured with the Mach5 HD deviates less than 2 units from a conventional spectrophotometer. The L^* -value (or else the Y-value) is the most commonly used to quantify soil removal. The a^* -value and b^* -value scored 96,3% and 94,4% respectively in these tests. A detailed report is available on request.

A calibration daily check plate with 24 different coloured tiles is included with the Mach5 HD. With this plate you can check the accuracy of the measurements of your device on a daily basis. This daily check is not a calibration, pure a check. As with every measurement device the Mach5 HD needs to be fully calibrated periodically. The advice is to have this done at least once a year.



HISTORY

One of the most time consuming parts of laundry detergent performance testing is measuring the results. This was commonly done by hand with spectral measurements. CFT BV started the search for a commercially available device that was able to perform multiple spectrophotometric measurements at once to speed up this process in 2010. We did

not find a solution that fulfilled our needs in terms of reliability, value for money, accuracy and lifetime. Together with Colour Consult BV, a company that provides custom build colour measurement solutions, we decided to take the matters into our own hands and took the initiative to develop a Multi Area Colour-measurement system: Mach5 HD.

HOW DOES IT WORK

When the testmaterial is entered into the soft closing drawer, the user can see the testmaterial on a live image in the Mach5 HD software. When the areas to measure are designated, you are able to obtain L*a*b*-values, XYZ -values and % reflection from 400 to 700nm per 10 nm of all areas with one click. For each area, the software automatically measures multiple smaller subareas to calculate the standard deviation within the area.

The names of the swatches or dishwash plates can be retrieved from a stain database and linked to the corresponding areas. All this data output can be easily copy/pasted to your software of choice or exported in .csv or .txt files.

The Software

The bespoke software of the Mach5 HD offers unique possibilities. Either a flexible manual selection of areas, or an automated time-saving selection of areas, can be used. In both cases, the variation within the selected areas can be restricted or recorded as a separate value.



All data output is automatically stored in a database together with the recorded image, which not only offers you unique visual opportunities, but also the possibility to discard the physical monitors.

The data can also be stored to a network drive or in your own analytic software. The user can even add his own complex formulas in Python script which can be run automatically from the Mach5 HD as a custom option.

The Mach5 HD software is installed on a 'frozen' PC delivered with the device. This means the PC is automatically wiped clean after every restart. This is to ensure the device is always working correctly. Obviously, the database with measurements is stored in a part of the drive that is not wiped clean.

Multi-Swatch Monitors

The use of multi-swatch monitors fully unlocks the potential of the Mach5 HD to increase the output of measurements. The Mach5 HD is fully equipped to measure multi-swatch monitors like the CFT SM-04, a monitor with 20 swatches



covering the full range of performance contributing components in detergents. Custom configuration of monitors is also possible and becoming more popular. In addition to the multi-swatch monitors, multi-stain monitors, or even a combination of both are also measurable with the Mach5 HD. Now custom multi-swatch monitors can hold up to 24 swatches and circular stains.



WORK FASTER

by measuring multiple areas in one scan
**guaranteed high and constant
colour quality**

FACTS & FIGURES

- One measurement takes 23 seconds.
- Based on the variation in the sub-areas the standard deviation is calculated for each area.
- With help of gridlines you can have the software position areas within 1 second.
- Area masks/lay-outs, gridlines, stain names can all be saved/stored for later retrieval.
- Each measurement is automatically saved: jpeg, sub-area data, CSV file, LAB values, xyz values and % reflection.
- Ensures fewer human errors
- Enables quantification of inhomogeneous areas
- Especially developed for the detergent industry
- Easy to operate
- Saves up to 85% of time spent on measuring.

FREQUENTLY ASKED QUESTIONS

Q How many measurements are done per area?

A One measures every pixel. So per area of 30 x 25 mm 4380 measurements are done. The software gives the average. Also per rectangular area 9 or 16 or 36 sub-areas are measured. This is stored with every measurement in a separate file.

Q Is the Mach5 HD suitable for measuring fluorescence effect?

A No, because the Mach5 HD does not have an UV-light-source. We have chosen not to work with UV-LEDs, because we believe that these are currently not stable enough.

Q How do you export the data?

A Easiest is just to copy-paste from Mach5 HD to Excel or Jump Excel is installed on the dedicated PC. Exporting to csv or txt files is also possible.

Q Is the Mach5 HD also suitable for measuring whiteness?

A The Mach5 HD gives Y-value which is a parameter that is sometimes used for scoring whiteness. The Mach5 HD is not suitable to measure Ganz Griesser or CIE whiteness (nor are most conventional spectro's). For that you need to have a calibratable UV lightsource. The Mach5 HD does not have an UV-lightsource, so you can also not calibrate it.

Q Do you also have the option to scan each individual area?

A Yes

Q How fast is the Mach5 HD?

A In combination with CFT's multi-swatch monitors one could easily measure 10.000 swatches per day up to even 2.000 swatches per hour.



SERVICE & DELIVERY



Continuing support is provided by Colour Consult BV. Our advice is to immediately purchase a two-year service contract. Service is then free for the first year. This will offer you technical service, software updates and the possibility to purchase custom built add-ons (hardware or software) such as a remote-access point for online

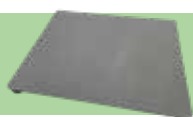
tech support. This allows Colour Consult BV to modify or update the Mach5 HD software remotely if necessary.

The new Mach5 HD is delivered as a plug and play solution which includes:

- Mach5 HD
- PC
- Monitor
- Keyboard
- Mouse
- Connection cables
- Calibration Chart
- Daily Check Calibration Tile
- Protective sleeve for Calibration Tile
- Frames for placing test materials

ACCESSOIRES

Measurement background



With larger surface and perfect height for measuring plates, for example

Mach5 HD 34° Holder



Special 34° holder for reducing gloss on shiny surfaces measuring with Mach5 HD - per piece

Mach5 HD Tile Bag



Knitted cotton bag to preserve Mach5 HD daily calibration check tile.